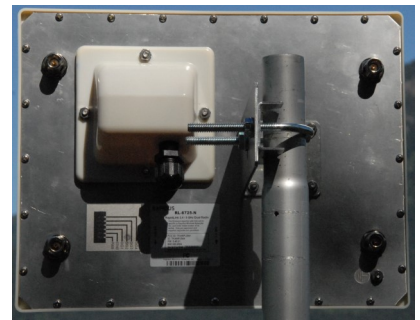




The RapidLink 6725-N-HP is a high power dual radio solution that supports both 2.4 and 5 GHz bands concurrently. The RL-6725 can be configured as dual AP's or one AP and one BackHaul. MESH topologies are supported as well.

The RL-6725-N-HP comes with Quad N connectors to connect external 2.4 GHz antennas and 5 GHz antennas. The 2.4 GHz radio can support 300 Mbps and the 5 GHz band will reach 867 Mbps at full modulation.

The RL-6725-N-HP is a very cost effective, high performance unit that can be configured to support point-to-point, point-to-multipoint and MESH topologies. The rugged enclosure is IP67 compliant to address challenging outdoor applications. Antennas sold separately.



Key Features

- 2.4GHz and 5GHz concurrent radios for high bandwidth
- 2.4GHz 23dBm and 5GHz 27dBm aggregate power
- Data rates of up to 867Mbps in 802.11ac 80 MHz channel
- Antenna Alignment Site Survey - LEDs/Buzzer
- Adjustment for long range transmission
- Quad N connectors, 2 for 2.4GHz 2x2 MIMO flexibility and 2 for 5 GHz 2x2 MIMO
- Supports up to 16 SSIDs (8 Per Radio)
- Web interface or unit can be managed with available controller. Unit supports SNMP management as well.

Software Configurations

Dual-band concurrent operation

AP with Backhaul

Dual AP

CPE

Point-to-Point

Point-to-Multipoint & MESH

**802.11ac+802.11bgn AP /
802.11an+802.11bgn AP**

Rapidus Wireless
47-14550 Morris Valley Rd.
Agassiz, BC. Canada V0M1A1
E-mail: sales@rapiduswireless.com
Web: www.rapiduswireless.com

Specifications

Model	RL-6725-N-HP
Antennas	2.4GHz: 2xN connectors, 5GHz: 2xN connectors. Antennas sold separately.
Power Consumption	18 watts max
Input Power	Included Passive PoE 24-56V or IEEE 802.3af (optional)
Reset Button	Yes
LED's	Indicators: Power LED, LAN Activity, 4x Signal Indicator
Interface	2x Gigabit Port (Auto MDI-X) 10/100/1000 supported
Certification	FCC and CE Certified, RoHS Compliance
Radio Power (per chain)	2.4GHz 23dBm and 5GHz 27dBm aggregate power
WiFi Standards	IEEE 802.11ac/a/b/g/n compliant
Performance	300 Mbps 2.4 GHz, 867 Mbps 5 GHz at full modulation
Management	Optional Controller, Web Interface, SNMP
Operating System	RapidusWRT based OS included
SSID's	8 per radio
Dimensions (WxHxD)	278.5 x 122.2 x 94.5 mm
Temperature	Operating: -60°C to 70°C, Storage: -40°C to 90°C

RF Performance

2.4GHz (Per Chain)			
	Data Rate	TX	RX
802.11b/g	6Mbps	26	-90
	54Mbps	22	-75
11n HT20	MCS0	26	-90
	MCS 7	20	-72
11n HT40	MCS0	26	-88
	MCS 7	20	-70

5GHz (Per Chain)			
	Data Rate	TX	RX
802.11a	6Mbps	27	-94
	54Mbps	24	-80
11n HT20	MCS0	27	-94
	MCS 7	22	-71
11n HT40	MCS0	26	-93
	MCS 7	21	-71
11ac HT20	MCS0	27	-94
	MCS 9	21	-71
11ac HT40	MCS0	26	-93
	MCS 9	21	-71
11ac HT80	MCS0	26	-89
	MCS 9	11	-68